

Table of Contents

Overview.....	3
Motor and Controller Connections	4
Power Input Connections.....	5
Transformer Protection	6
RWL Connections	7
GHK Connections	9
Thermostat Connections.....	11
Complete Wiring Diagram.....	12
Trouble Shooting	13

Model ABB2M

24VDC Power Supply

Power Input is 120VAC

Control Output is (2) 24VDC outputs at 10A each

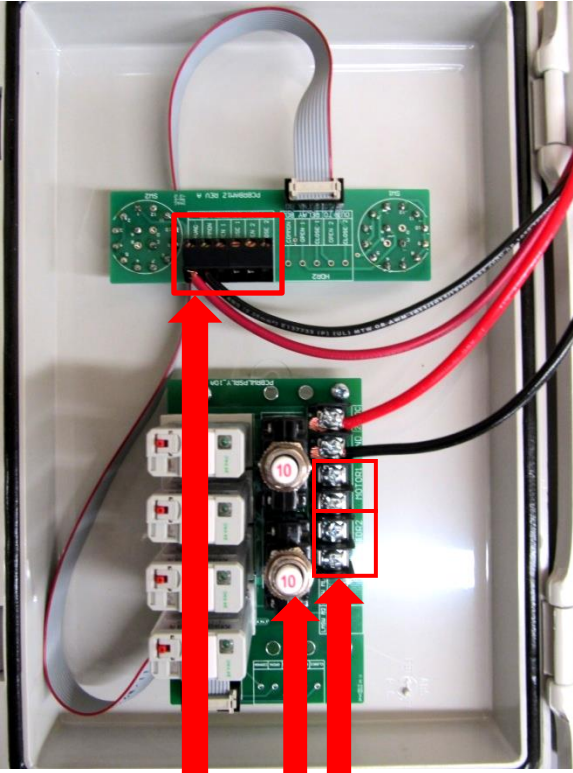
-Protected by resettable circuit breakers.

500 Watt Maximum

Manual/Automatic Control

Accepts Inputs from Automatic Controls

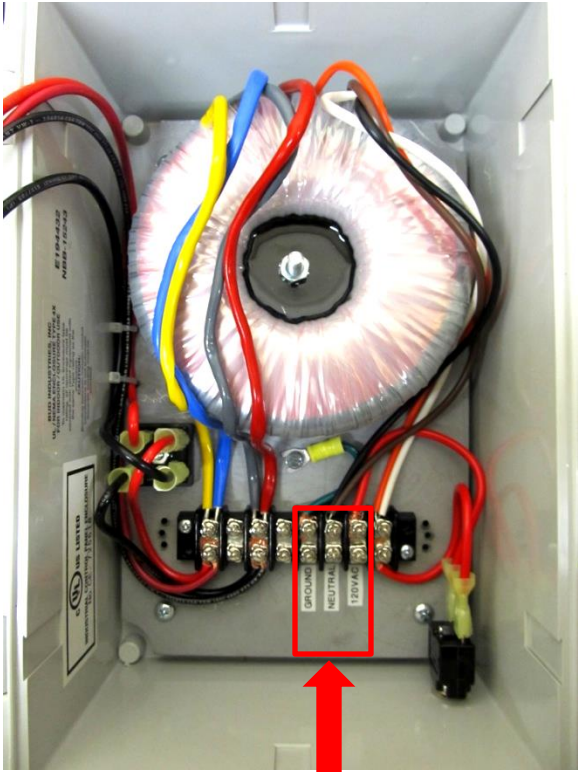
- 24VAC signals or Thermostats



Optional Controller Inputs. See wiring diagram for further assistance

Motor Connections. See wiring diagram for further assistance

10A Resettable Circuit Breakers

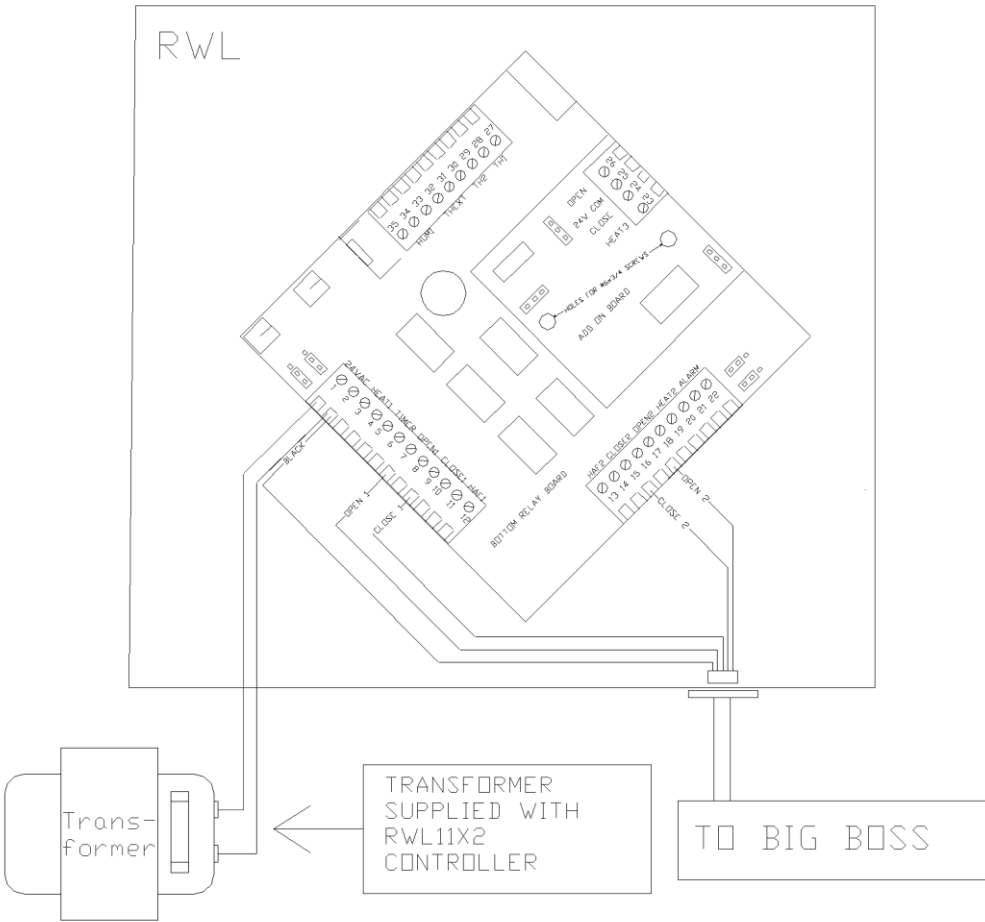


120VAC INPUT CONNECTIONS

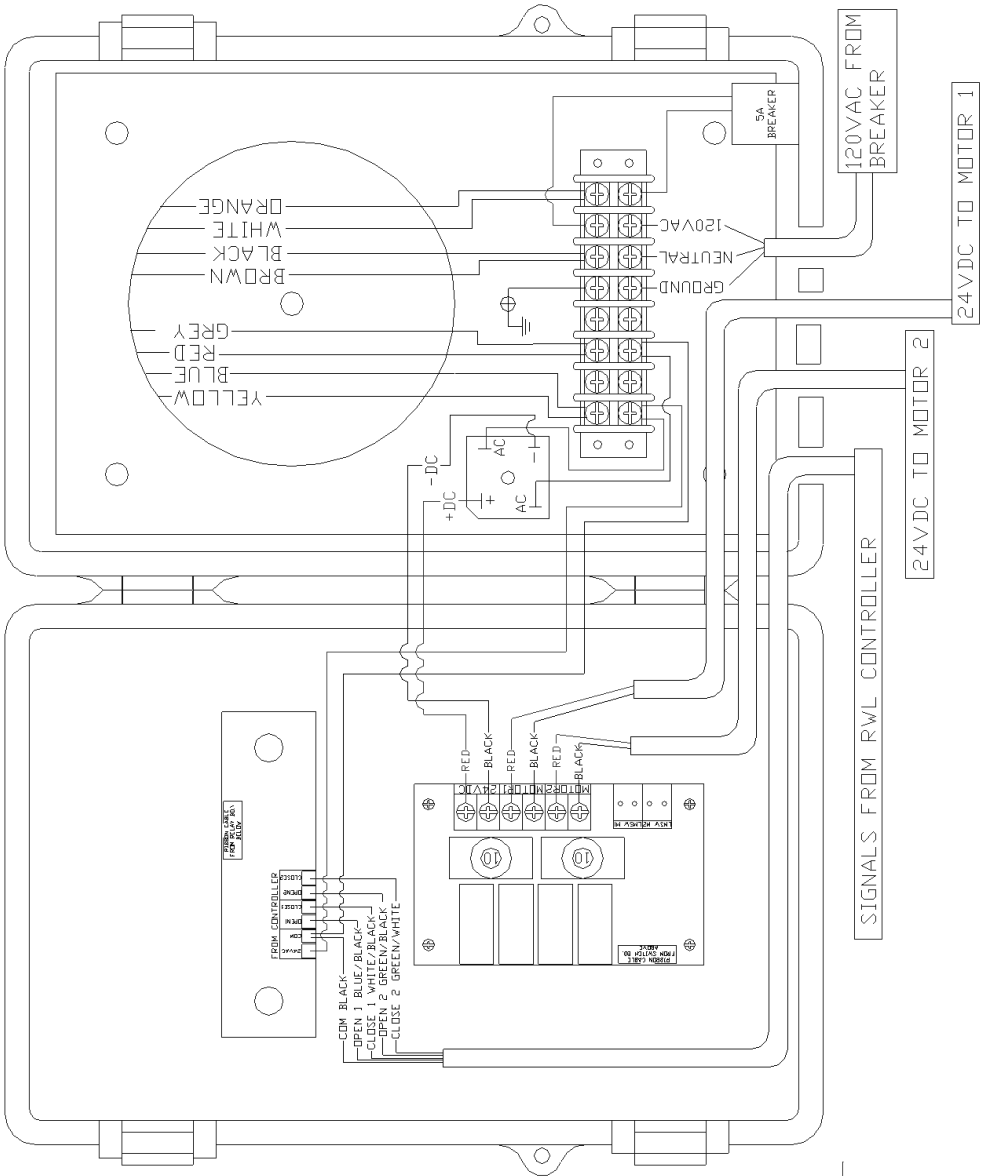


5 AMP Circuit Breaker for
Transformer Protection

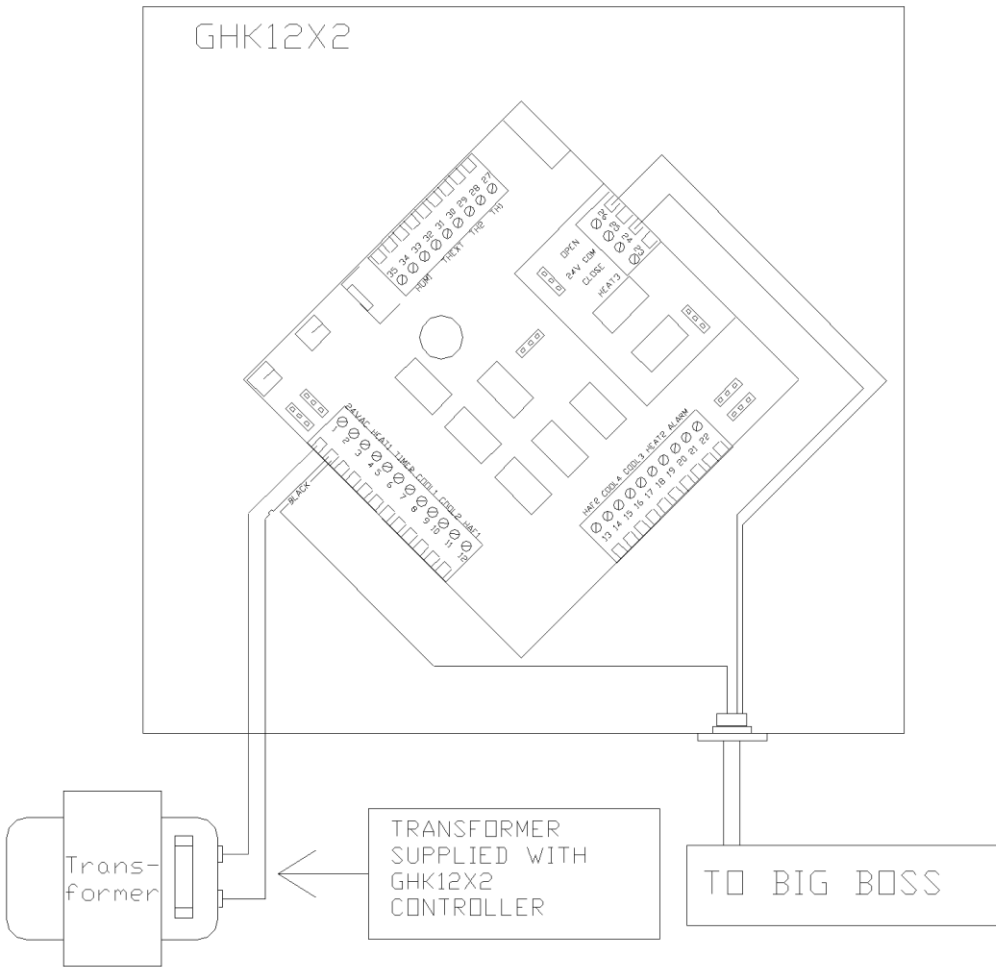
Connections to RWL11X2 Controller



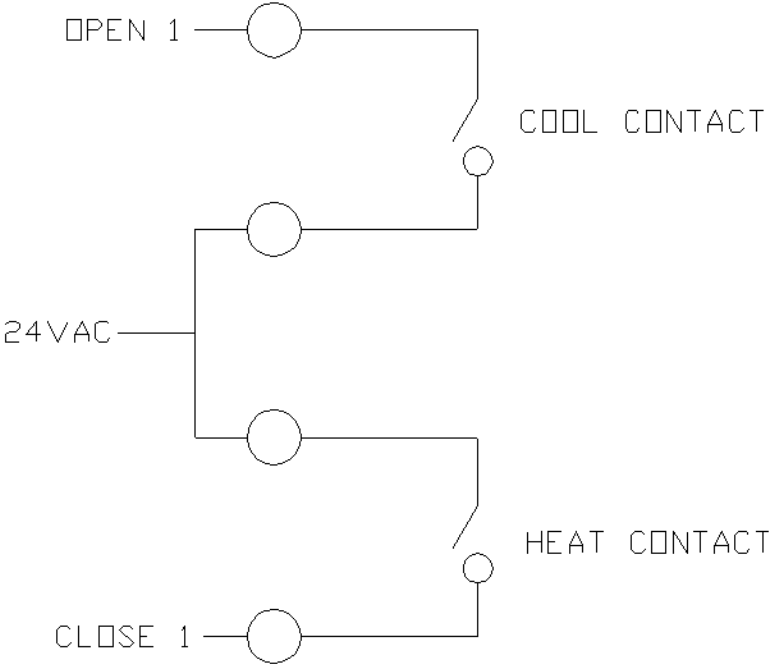
BIG BOSS BELOW IS SHOWN WITH LID OPEN



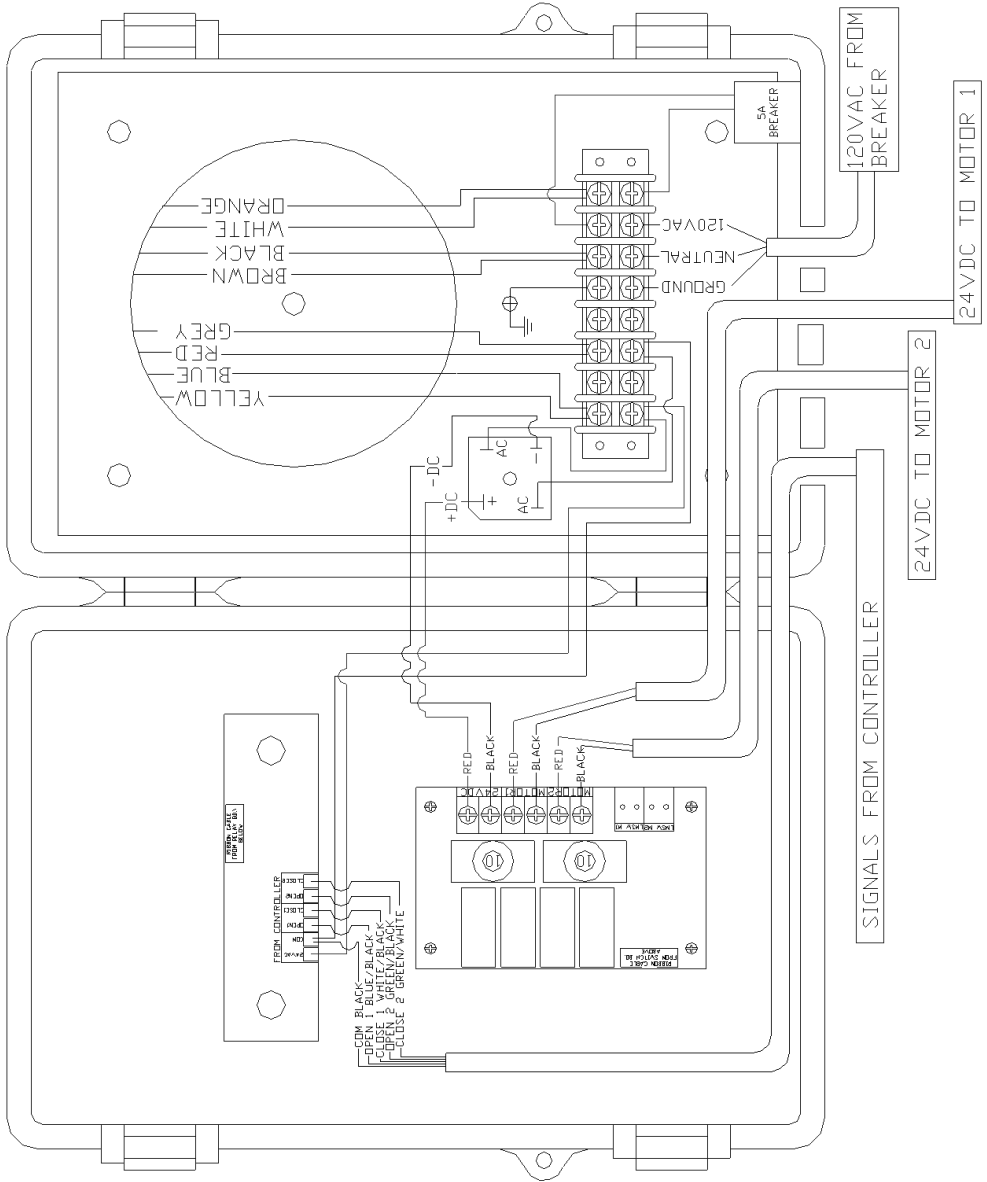
Connections to GHK12X2C Controller



Connections to Heat/Cool Thermostat



BIG BOSS BELOW IS SHOWN WITH LID OPEN



SIGNALS FROM CONTROLLER

24VDC TO MOTOR 2

24VDC TO MOTOR 1

120VAC FROM BREAKER

Trouble Shooting

If the 10 amp circuit breaker shown on page 4 for either motor is tripped, check for any shorts in the wiring of the motor. Check also to see if the motor is in a bind. Once the check is done and everything looks clear, reset the breaker.

If the 5 amp circuit breaker shown on page 6 is tripped, check incoming power for shorts. Also, test the transformer for shorts. Once the check is done and everything looks clear, reset the breaker.