



SERVICE PARTS LIST

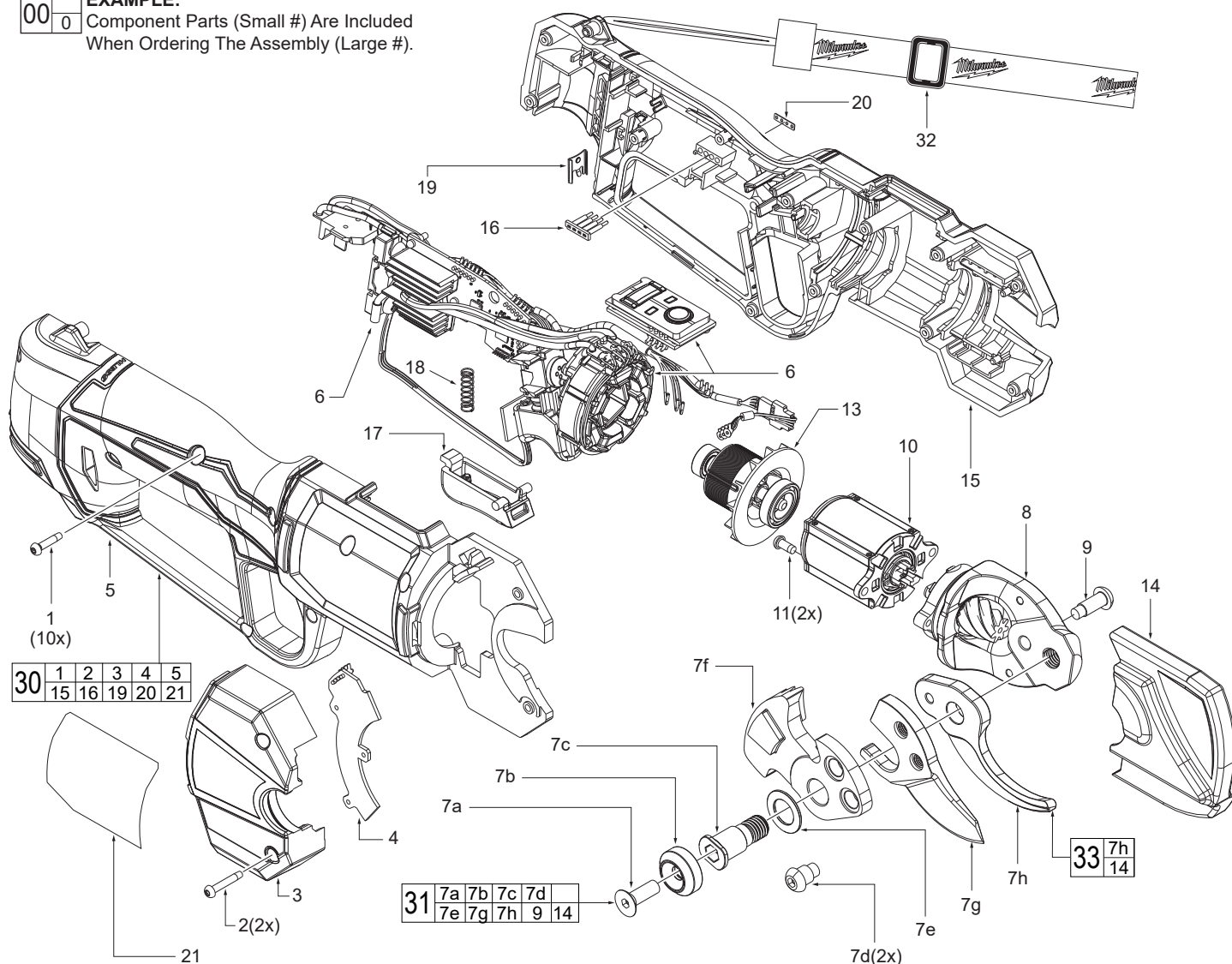
BULLETIN NO.**54-44-0010****SPECIFY CATALOG NO. AND SERIAL NO. WHEN ORDERING PARTS****REVISED BULLETIN****DATE**
July 2024**M12™ PRUNING SHEAR****WIRING INSTRUCTION****CATALOG NO. 2534-20****SERIAL NO. N19A****SEE PAGE 2****00**
0**EXAMPLE:**Component Parts (Small #) Are Included
When Ordering The Assembly (Large #).

FIG.	PART NO.	DESCRIPTION OF PART	NO. REQ.
1	-----	M3 x 14mm T10 Screw	10
2	-----	M3 x 18mm T10 Screw	2
3	-----	Handle Sensor Cover	1
4	-----	Sensor Board	1
5	-----	Handle Cover	1
6	14-20-2534	PCBA & Motor Stator Service Assembly	1
7a	-----	Machine Screw	1
7b	42-52-0009	Locking Cap	1
7c	06-65-0006	Blade Mounting Pin	1
7d	-----	Blade Mounting Screw	2
7e	45-88-0123	Blade Pin Washer	1
7f	32-05-0112	Bevel Gear	1
7g	-----	Cutting Blade	1
7h	-----	Support Blade	1
8	14-46-0546	Frame Service Assembly	1
9	06-82-0310	Frame Hex Screw	1
10	14-29-0069	Gearbox Service Assembly	1
11	06-82-2660	M3.5 x 8mm TapTite Screw	2
13	14-50-0056	Motor Rotor & Pinion Service Assembly	1
14	42-26-4104	Blade Cover	1
15	-----	Handle Support	1
16	31-01-0201	Light Pipe	1
17	31-92-0005	Finger Lock	1

FIG.	PART NO.	DESCRIPTION OF PART	NO. REQ.
18	40-50-0417	Lockoff Trigger Spring	1
19	42-70-0058	Housing Connection Clip	1
20	10-20-4479	Gauge Label	1
21	12-20-2534	Service Nameplate	1
30	14-38-0039	Housing Service Kit	1
31	42-26-4120	Blade Service Kit	1
32	45-56-2534	Wrist Strap	1
33	42-26-4119	Support Blade & Blade Cover Service Kit	1

SCREW TORQUE SPECIFICATIONS

FIG.	PART NO.	WHERE USED	SEAT TORQUE	
			(kgf-cm)	(lb-in)
1	-----	Handle Cover	10±1	8.7±1
2	-----	Sensor Cover	10±1	8.7±1
7a	-----	Locking Cap	55±2	47.7±1
7c	06-65-0006	Blade Kit	200±4	173.5±2
7d	-----	Blade Kit	120±2	104.2±1
9	06-82-0310	Frame Assembly	80±2	69.4±1
11	06-82-2660	Gearbox Assembly	16±2	13.9±1

MILWAUKEE TOOL • www.milwaukeetool.com

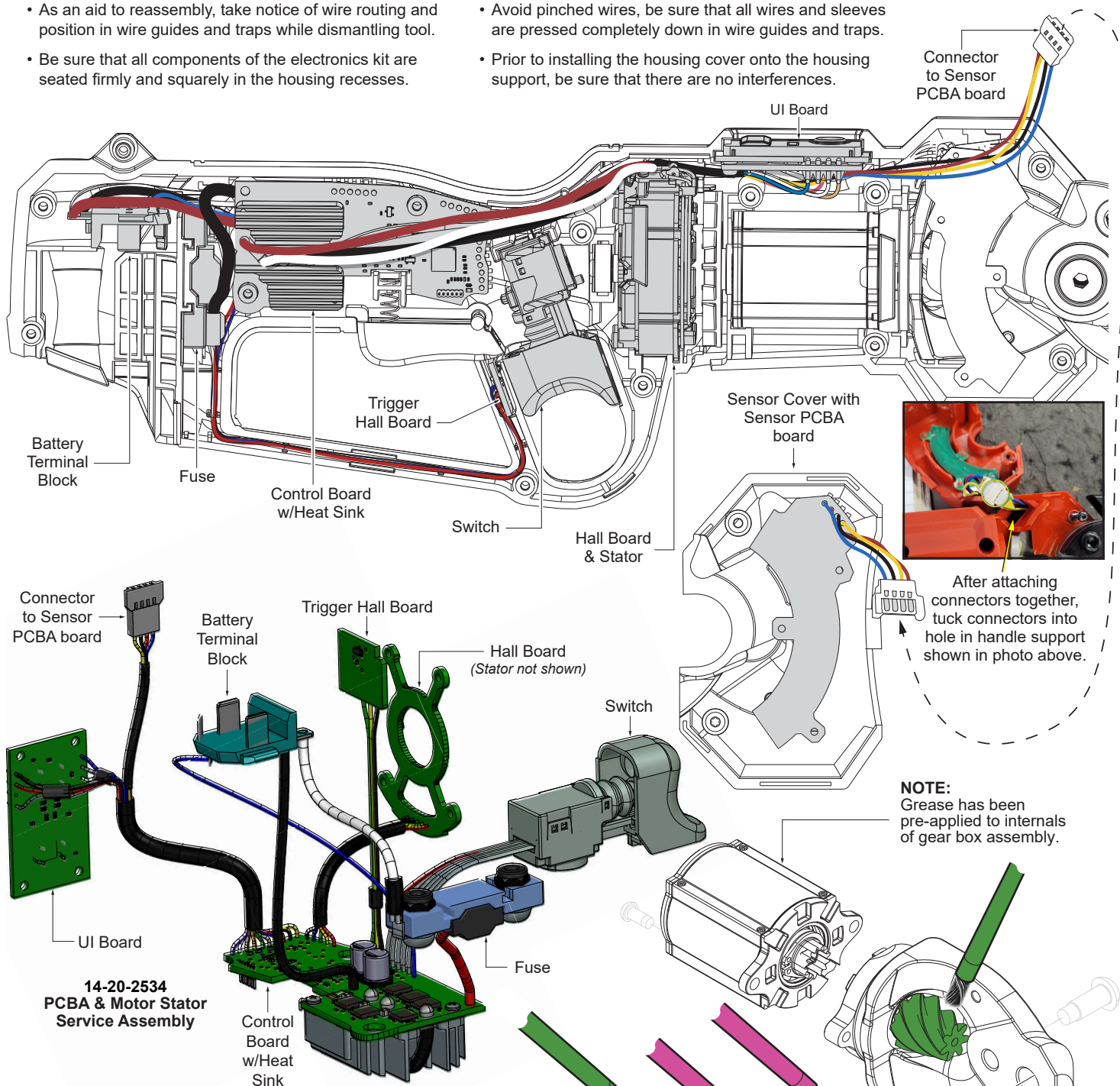
13135 W. LISBON RD., BROOKFIELD, WI 53005

Drwg. 4

SERVICE WIRING DIAGRAM

- As an aid to reassembly, take notice of wire routing and position in wire guides and traps while dismantling tool.
- Be sure that all components of the electronics kit are seated firmly and squarely in the housing recesses.

- Avoid pinched wires, be sure that all wires and sleeves are pressed completely down in wire guides and traps.
- Prior to installing the housing cover onto the housing support, be sure that there are no interferences.



LUBRICATION INSTRUCTIONS

- 1 lb. Type "J" Grease, No. 49-08-4220
- Renolin DO 22 HV Oil, No. 49-32-2534

NOTE:

Regarding parts to receive oil:
Place one to two drops of the recommended oil (or the equivalent) to the parts shown after assembly. Make sure no oil is on the fastener threads or mating threads.

NOTE:

Regarding parts to be lubricated:
Apply a light coating of grease to all highlighted parts shown prior to installation. Reference the key above for grease types.

NOTE:

Add oil between support/cutting blades #7g & #7h, locking cap #7b, washer #7e and bevel gear #7f after assembly. Make sure no oil is on the fastener threads or mating threads.