

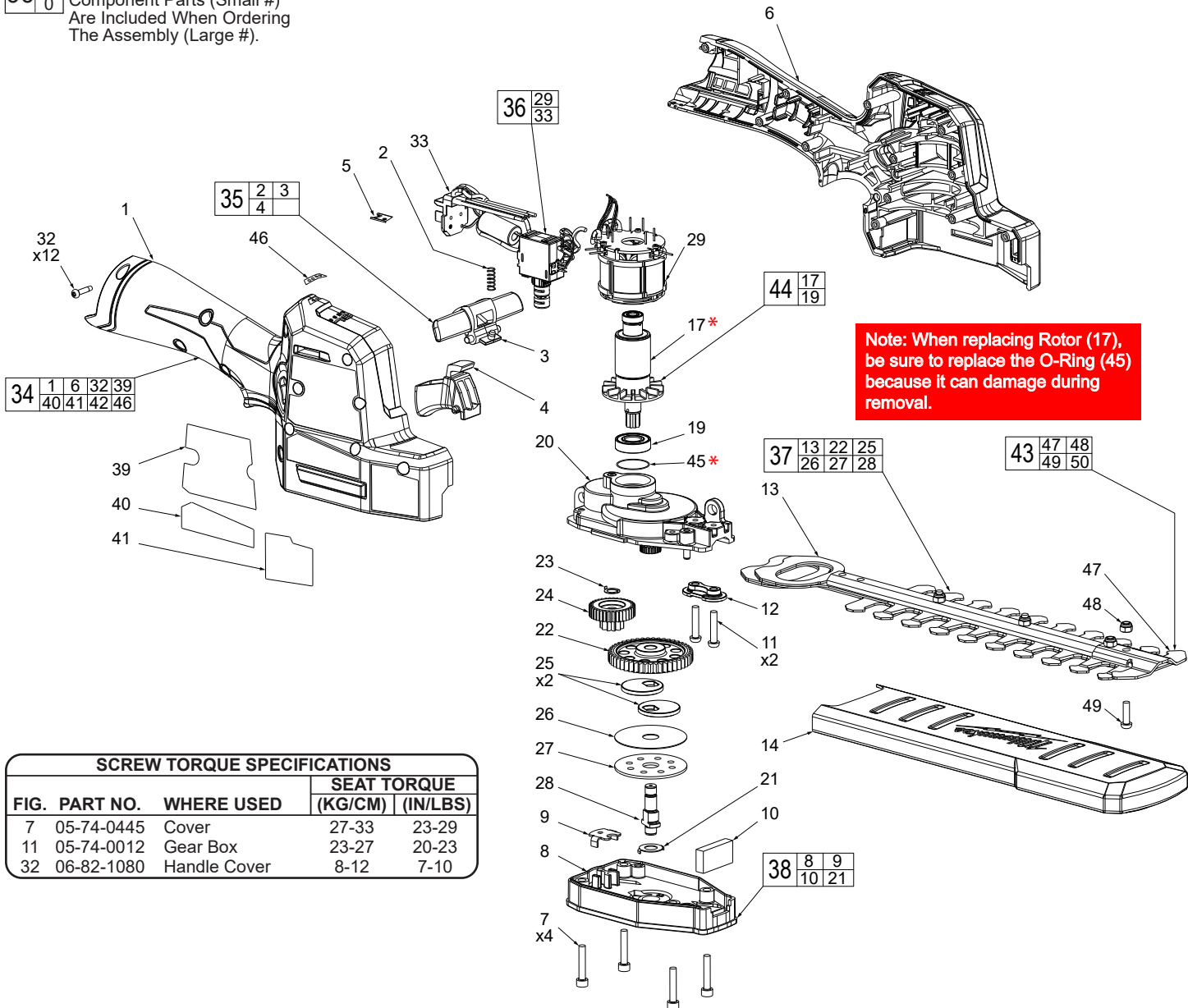


SERVICE PARTS LIST

BULLETIN NO.
54-49-2530

SPECIFY CATALOG NO. AND SERIAL NO. WHEN ORDERING PARTS			REVISED BULLETIN	DATE
M12™ FUEL™ HEDGE TRIMMER				Feb. 2022
CATALOG NO.	2533-20	STARTING SERIAL NO.	See Page 3	
		M68A		

EXAMPLE:
Component Parts (Small #)
Are Included When Ordering
The Assembly (Large #).



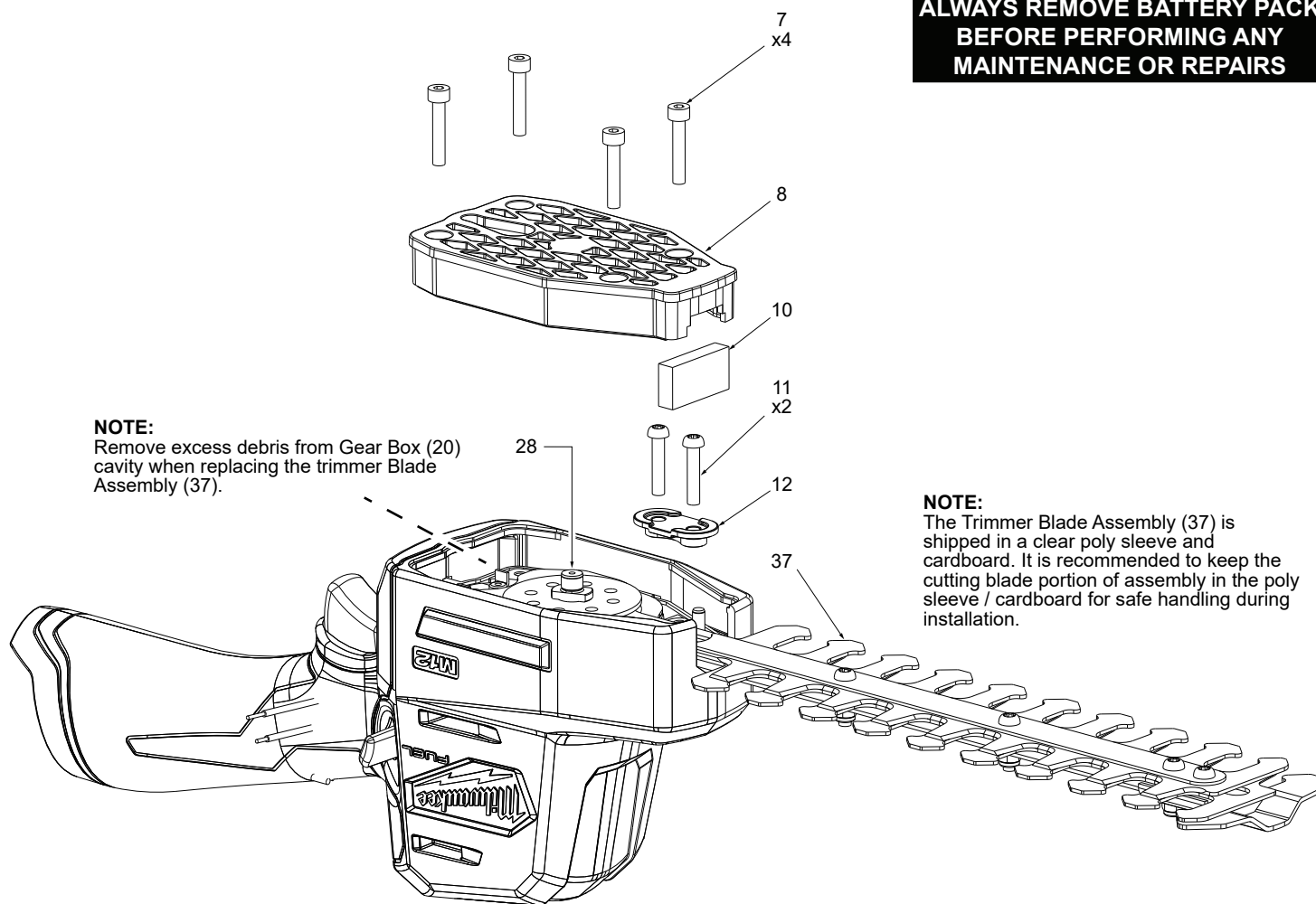
SCREW TORQUE SPECIFICATIONS

FIG.	PART NO.	WHERE USED	SEAT TORQUE	
			(KG/CM)	(IN/LBS)
7	05-74-0445	Cover	27-33	23-29
11	05-74-0012	Gear Box	23-27	20-23
32	06-82-1080	Handle Cover	8-12	7-10

FIG.	PART NO.	DESCRIPTION OF PART
1	-----	Handle Cover
2	40-50-1760	Spring
3	-----	Lock off Lever
4	-----	Trigger
5	42-70-0058	Housing Connection Clip
6	-----	Handle Support
7	05-74-0445	M4 x 0.7 Hex Screw
8	-----	Cover
9	-----	Washer
10	-----	Foam Insert
11	05-74-0012	M4 x 0.7 Pan Hd. T-20 Screw
12	42-40-2533	Cover w/ Bushings
13	-----	Trimmer Blades
14	31-55-0455	Blade Sheath
16	-----	Ball Bearing
17	-----	Rotor
19	-----	Ball Bearing
20	-----	Gear Box
21	-----	Washer
22	-----	Output Gear
23	-----	Washer to Middle Shaft
24	-----	1st and 2nd Driven Gear
25	-----	Cam Coin
26	-----	Cam Washer
27	-----	Cam Cover

NO. REQ.	FIG.	PART NO.	DESCRIPTION OF PART	NO. REQ.
1	28	-----	Output Shaft	1
1	29	-----	Stator	1
12	32	06-82-1080	M3 ST Screw	12
1	33	-----	PCBA	1
1	34	31-44-2533	Handle Housing Kit	1
1	35	14-46-0493	Trigger Kit	1
1	36	14-20-0138	PCBA w/ Motor Assembly	1
1	37	42-26-0018	Trimmer Blade Assembly	1
1	38	14-30-0046	Gearcase Kit	1
1	39	10-20-3937	Warning Label	1
1	40	10-20-3938	Warning Label	1
1	41	12-20-1033	Service Nameplate	1
1	42	10-20-3939	Warning Label (Not Shown)	1
1	43	14-46-0494	Trimmer Blade Hardware Kit	1
1	44	16-01-2533	Rotor Assembly	1
1	45	34-40-0108	O-Ring	1
1	46	10-20-4359	Gauge Label	1
1	47	-----	Tip Guard	1
4	48	-----	M4 Hex Nut	4
4	49	-----	M4 Screw	4
4	50	-----	Bushing (Not Shown)	4

**ALWAYS REMOVE BATTERY PACK
BEFORE PERFORMING ANY
MAINTENANCE OR REPAIRS**



NOTE:

Remove excess debris from Gear Box (20) cavity when replacing the trimmer Blade Assembly (37).

NOTE:

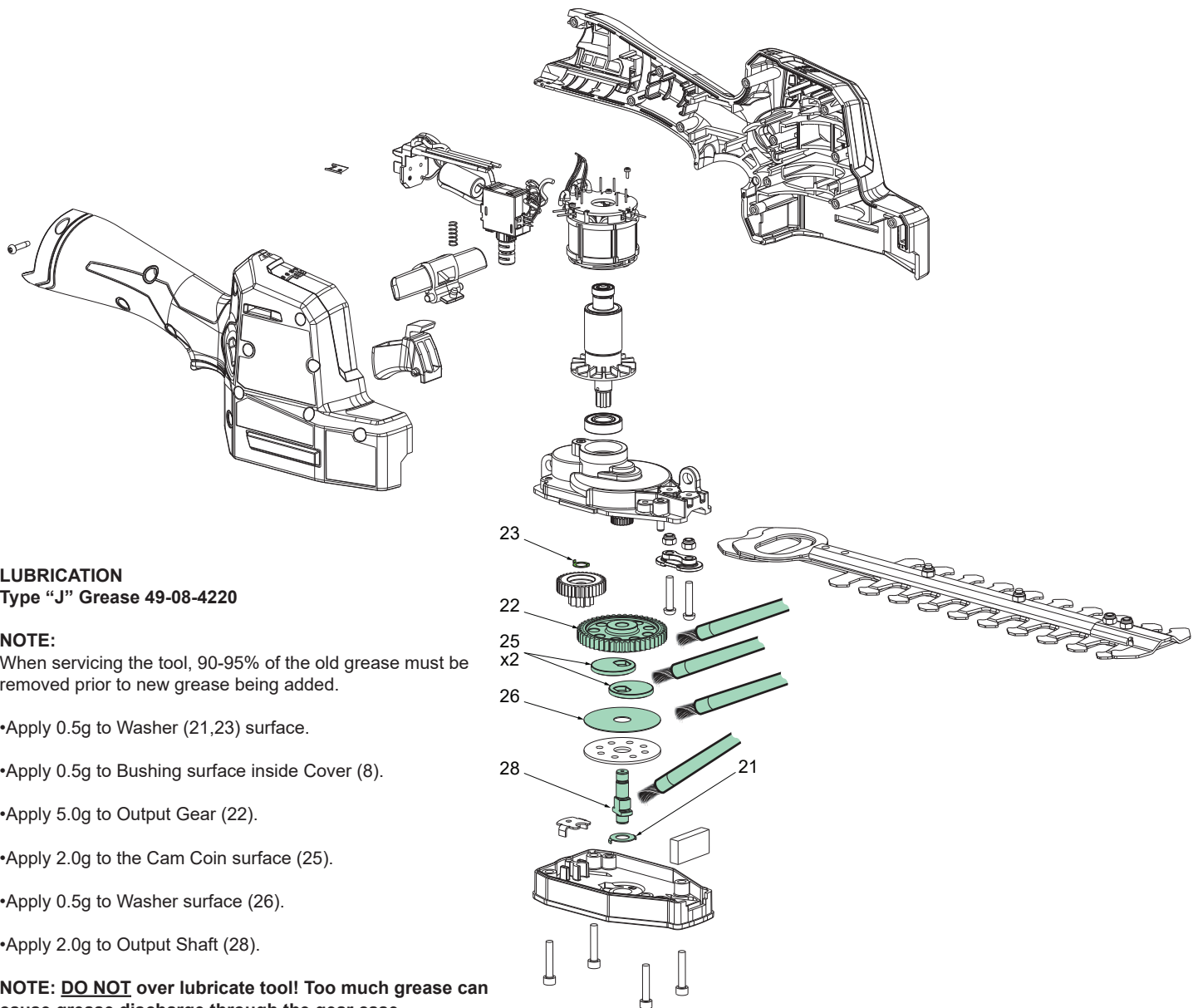
The Trimmer Blade Assembly (37) is shipped in a clear poly sleeve and cardboard. It is recommended to keep the cutting blade portion of assembly in the poly sleeve / cardboard for safe handling during installation.

REMOVING TRIMMER BLADE ASSEMBLY

- **Remove battery pack**
- Remove four Screws (7).
- Remove Gearcase Kit (38).
- Remove two Screws (11).
- Remove Cover w/ Bushings (12).
- Remove Trimmer Blade Assembly (37) away from tool.

INSTALLING REPLACEMENT BLADE ASSEMBLY

- Place Trimmer Blade Assembly (37) into gearbox (20) gear side down.
- Place a light coating of lubrication on the Output Shaft (28).
- Place Cover w/ Bushings (12) onto Trimmer Blade Assembly (37)
- Place a drop of red locking sealant onto the threads of screws (11). Insert screws through the Cover w/ Bushings (12) and fasten to Gearbox.
- Place Cover (8) onto gear case.
- Secure Gear Case Kit (38) to Gear Box and fasten four Screws (7).
- Remove plastic cover (if used) from blade assembly. Install battery and check for functionality.



WIRING INSTRUCTION

